

The Use of the Alef Education Platform as an Interactive Media in Arabic Language for Science and Technology Materials

Penggunaan Platform Alef Education Sebagai Media Interaktif Bahasa Arab Terhadap Materi Ilmu Pengetahuan dan Teknologi

Yuyun Rohmatul Uyuni

Universitas Islam Negeri Sultan Maulana Hasanuddin Banten, Indonesia

Email: yuyun.rohmatul@uinbanten.ac.id

Nuroh

Universitas Islam Negeri Sultan Maulana Hasanuddin Banten, Indonesia

Email: 232622105.nuroh@uinbanten.ac.id

Siti Shalihah

Universitas Islam Negeri Sultan Maulana Hasanuddin Banten, Indonesia

Email: siti.shalihah@uinbanten.ac.id

DOI: 10.14421/almahara.2024.0101-11

Abstract

Alef Education is an interactive digital platform that offers various innovative learning tools and resources. Arabic language learning using the Alef platform is shown as technology-based learning to meet the needs of the learning system in madrasas. The technology used by students is mobile phones, computers, and laptops by having a good quota and network, students can bring one of these technologies to the madrasah for learning. The platform creates a personalized learning experience for students to play an important role as well as help students achieve better learning outcomes. The platform supports teachers by providing engaging content and games that are appropriate to the curriculum, aiding in student assessment and management. This study aims to find out how to use the Alef Education platform as an interactive media in Arabic, especially for Science and Technology (IPTEK) materials. The research method used is a literature review approach with a descriptive qualitative method. This research data was collected using the library research technique, which is a literature study by reading books, articles, and other data sources in the library. Also, in the form of documentation of the features of the Alef Education platform and various development tutorials on the use of Alef Education learning media available on the Website. The data analysis technique used in this study is content analysis, which is research that is an in-depth discussion of the content of written or printed information and then concludes based on the data that has been collected and analyzed. The results of this study show that Alef Education can be used as a medium and tool for learning Arabic for "Science and Technology" material, of course, it can be used by teachers and students with various features that the Alef Education platform can increase interactive learning skills and students' interest in learning Arabic.

Keywords: Alef Education, Arabic, Media, Technology

Abstrak

Alef Education sebuah platform digital interaktif melalui penawaran berbagai alat dan sumber belajar yang inovatif. Pembelajaran bahasa Arab menggunakan platform Alef ditunjukkan sebagai pembelajaran berbasis teknologi untuk memenuhi kebutuhan sistem belajar di madrasah. Teknologi yang digunakan siswa yaitu *handphone*, komputer, dan laptop dengan memiliki kuota dan jaringan yang baik, siswa dapat membawa salah satu teknologi tersebut ke madrasah untuk pembelajaran. Platform ini menciptakan pengalaman belajar yang dipersonalisasi bagi siswa dalam memainkan peran penting serta membantu siswa mencapai hasil belajar yang lebih baik. Platform ini mendukung guru dengan menyediakan konten menarik dan permainan yang sesuai dengan kurikulum, membantu dalam penilaian dan manajemen siswa. Penelitian ini bertujuan untuk mengetahui bagaimana penggunaan platform Alef Education sebagai media interaktif bahasa Arab, khususnya terhadap materi Ilmu Pengetahuan dan Teknologi (IPTEK). Metode penelitian yang digunakan adalah pendekatan tinjauan pustaka dengan metode kualitatif deskriptif. Data penelitian ini dikumpulkan dengan teknik *library research*, yaitu studi kepustakaan dengan cara membaca buku-buku, artikel, dan sumber data lainnya dalam perpustakaan. Juga berupa dokumentasi fitur-fitur platform Alef Education dan berbagai pengembangan tutorial penggunaan media pembelajaran Alef Education yang tersedia pada Website. Teknik analisis data yang digunakan dalam penelitian ini adalah analisis isi (*Content analysis*) yaitu penelitian yang bersifat pembahasan mendalam terhadap isi suatu informasi tertulis atau tercetak kemudian menyimpulkan berdasarkan data-data yang telah dikumpulkan dan di analisis. Hasil penelitian ini ditunjukkan bahwa Alef Education dapat dipergunakan sebagai media dan alat bantu pembelajaran bahasa Arab terhadap materi "Ilmu Pengetahuan dan Teknologi", tentu dapat digunakan guru maupun siswa dengan berbagai macam fitur yang dimiliki platform Alef Education dapat meningkatkan kemampuan interaktif belajar serta minat siswa dalam mempelajari bahasa Arab.

Kata Kunci: Alef Education, Bahasa Arab, Media, Teknologi

Introduction

Arabic language learning media has experienced a very rapid development along with the development of technology and the whole world has experienced an increase in interest in learning Arabic.¹ Traditional methods such as classic textbooks and classroom courses are still relevant but are now equipped with extensive digital technology resources such as videos, interactive exercises, and learning platforms. Arabic learning apps like Duolingo, Memrise, Kahoot, AlifBee, and others have revolutionized the way one learns Arabic through a fun approach.² Advanced technologies such as Virtual reality (VR) and

¹Syindi Oktaviani R. Tolinggi, "Pembelajaran Bahasa Arab di Indonesia Pada Era Revolusi Teknologi Tak Terbatas (Strengths, Weaknesses, Opportunities, and Threats)," *An Nabighoh: Jurnal Pendidikan dan Pembelajaran Bahasa Arab* 23, no. 1 (2021): 33-49, <https://doi.org/10.32332/an-nabighoh.v23i1.2231>.

²Ningsih Manoppo, Siti Aliyya Laubaha, and Nurhanifa Basarata, "Ragam Aplikasi Dalam Pembelajaran Bahasa Arab," *Assuthur: Jurnal Pendidikan Bahasa Arab* 1, no. 2 (2023): 80-97, <https://doi.org/10.58194/as.v1i2.473>.

Augmented reality (AR) have begun to create immersive learning experiences that allow students to interact with language in a real, simulated environment,³ In addition, audiovisual media such as YouTube videos, TikTok, and Podcasts provide diverse and contextual content thus facilitating understanding of Arabic through listening in real situations.⁴ Dictionary and online translators such as Google Translate, *Mu'jam Al-Ma'any*, Bing Translator, Yandex Translate, and so on provide translation tools to expand the understanding of the Arabic language.⁵ Despite various challenges such as dialect diversity and the availability of technology, it shows that the future of Arabic learning is increasingly inclusive, personalized, and adaptable so that more people to learn Arabic more effectively and enjoyably.

Media is one of the factors that supports the success of the learning process in schools because its function can help the process of conveying information from teachers to students or vice versa.⁶ Alef Media has a variety of sophisticated tools through its fun learning concept. The lesson features on the Alef platform are presented in various forms such as games, videos and interactive quizzes so that students are always entertained and encouraged to learn. Through Alef's media innovation, this media makes it easier for teachers and students to carry out a flexible learning process that can be used anytime and anywhere.⁷ Alef platform supports distance learning and can also be a platform that can be used for in-person learning.⁸

Alef Education Learning Media is a digital platform for Arabic language education in Madrasah. Alef Education is a leading K-12 educational technology company in the United

³Aunur Shabur, Maajid Amadi, and Dina Wilda Sholikha, "Perkembangan Pendidikan Bahasa Arab di Era Digital: Sistematis Literature Review," *Jurnal Motivasi Pendidikan dan Bahasa* 1, no. 3 (2023): 301-309, <https://journal.widyakarya.ac.id/index.php/jmpb-widyakarya/article/view/1112>.

⁴Rahma M. Naser, "Meningkatkan Pembelajaran Bahasa Arab Siswa Melalui Media Audio Visual Dalam Manajemen Pendidikan Islam Tinjauan (Studi di Madrasah Aliyah Negeri 2 Kota Palu)," *Jurnal Kolaboratif Sains* 5, no. 8 (2022): 466-480, <https://doi.org/10.56338/jks.v5i8.2695>.

⁵Yuniarti Amalia Wahdah, Muhajir Muhajir, and Abdurrahman Wahid Abdullah, "Kamus Online Sebagai Media Penerjemahan Teks Bagi Calon Guru Bahasa Arab," *Edukasiana: Jurnal Inovasi Pendidikan* 2, no. 3 (2023): 138-150, <https://doi.org/10.56916/ejip.v2i3.368>.

⁶Udi Budi Harsiwi and Liss Dyah Dewi Arini, "Pengaruh Pembelajaran Menggunakan Media Pembelajaran Interaktif Terhadap Hasil Belajar Siswa di Sekolah Dasar," *Jurnal Basicedu* 4, no. 4 (2020): 1104-1113, <https://doi.org/10.31004/basicedu.v4i4.505>.

⁷Fahril, Nurbiah, and Ahmad Syafi'i Syafi'i, "Implementation of the Problem-Based Learning's Model Help Alef Education in Mts As'adiyah Uloe," *An-Nahdlah: Journal of Islamic Studies* 1, no. 1 (2024): 54-70, <https://doi.org/10.62261/annahdlah.v1i1.4>.

⁸Sahrul Muhamad et al., "Pembelajaran Maharatul Kalam Berbasis Media Alef Di Madrasah Tsanawiyah," *Nady Al-Adab: Jurnal Bahasa Arab* 21, no. 1 (2024): 1-15, <https://doi.org/https://doi.org/10.20956/jna.v21i1.32375>.

Arab Emirates (UAE). Alef Platform is a digital learning program that supports teaching and learning using technology.⁹ Arabic language learning using the Alef platform is shown as technology-based learning to meet the needs of the system in madrasas. The technology used by students is mobile phones, computers, and laptops with a good quota and network, so students can bring one of these technologies to the madrasah for learning. The platform creates a personalized learning experience for students playing a crucial role in helping students achieve better learning outcomes.¹⁰ The platform supports teachers by providing engaging content and games that are appropriate to the curriculum, aiding in student assessment and management. Arabic content on *maharah kalam, qiro'ah, kitabah, istima'* is interesting and by very attractive educational standards, an easy-to-use platform for students and teachers. Lessons using the GASING method.¹¹

According to research by Nuroh and Ubaidillah (2023), the use of Alef Education learning media can be a reference for the teaching and learning process, create an interesting learning atmosphere, and ensure the success of the communication process in learning. Educators act as facilitators in learning activities by developing the potential, learning styles, and learning needs of very diverse students. There is an influence on the use of Alef Education learning media on the mastery of *Maharah istima'*. It is evident from the mean value in the Post-test in the experimental class of 86.11 and the Post-test in the control class of 90.56. The $t_0 : t_t$ value is $5.168 > 2.032$ at the significance level of 5% (0.025) and $5.156 > 2.728$ at the significance level of 1% (0.005). By using Alef Education, students become easier in solving abstract Arabic language problems, and easier to understand Arabic learning materials, especially science and technology materials, if delivered without using conventional media, it will make students bored and not understand the material delivered by the teacher.¹² Another study explained that Alef Education's media presents material to students by presenting learning videos in the form of animations and interesting

⁹Aisha Hassan Alyammahi, "The Impact of Alef Platform on Students' Performance at Al Asayel School in Abu Dhabi, UAE," *Journal for Researching Education Practice and Theory (JREPT)* 2, no. 1: 80-108 (2019): 82.

¹⁰Rini Diniati, "Pemanfaatan Platform Alef Dalam Pembelajaran Matematika Kelas VII," *ACTION: Jurnal Inovasi Penelitian Tindakan Kelas Dan Sekolah* 3, no. 4 (2023): 266-273, <https://doi.org/10.51878/action.v3i4.2562>.

¹¹Nuroh and Ubaidillah, "Pengaruh Penggunaan Media Pembelajaran Alef Education Terhadap Penguasaan Maharah Istima'," *Al-Ittijah: Jurnal Keilmuan dan Kependidikan Bahasa Arab* 15, no. 2 (2023): 156-170.

¹²Surayanah et al., "The Effect of The Self-Regulated Learning with The Alef Education Platform to Improve the High-Order Thinking Skills in Elementary School," in *2022 8th International Conference on Education and Technology (ICET)* (IEEE, 2022), 95-98, <https://doi.org/10.1109/ICET56879.2022.9990733>.

conversations using interactive images and sounds, then students are given instructions to follow the audio conversation that comes out of the video, so students are trained to speak using Arabic. The supporting factors found are that there are computer labs, projectors such as LCDs, and Wi-Fi networks in madrasas, while the most frequently encountered inhibiting factor is an unstable internet network.

Regarding the use of Alef Education's platform as an interactive medium, Arabic language learning has shown significant potential in combining language education with science and technology materials. Alef Education is designed as a state-of-the-art digital learning platform, providing content that not only focuses on language but also integrates Science and Technology.¹³ Researchers hope that the use of Alef Education can bridge the gap in learning Arabic and for students to keep up with technological and global developments. Thus, Alef Education is expected to become a model of future learning platforms that combine language teaching with multidisciplinary knowledge efficiently and attractively.¹⁴ The purpose of this writing is to find out how to use the Alef Education platform as an interactive media in Arabic language in science and technology materials.

This research is a type of literature research with a descriptive qualitative research method that examines various references related to Alef Education in interactive learning Arabic as a learning medium. This research data was collected using the Library research technique, which is a literature study by reading books, articles, and other data sources in the library and the form of documentation of Alef Education platform features and various development tutorials on the use of Alef Education learning media available on the Website.¹⁵ The data analysis technique in this study is content analysis, which is research that is an in-depth discussion of the content of written or printed information and then concludes based on the data that has been collected and analyzed.¹⁶

¹³Natalia V. Rakhlin, Abdullah Aljughaiman, and Elena L. Grigorenko, "Assessing Language Development in Arabic: The Arabic Language: Evaluation of Function (ALEF)," *Applied Neuropsychology: Child* 10, no. 1 (2021): 37-52, <https://doi.org/10.1080/21622965.2019.1596113>.

¹⁴Nuroh and Ubaidillah, "Pengaruh Penggunaan Media Pembelajaran Alef Education Terhadap Penguasaan Maharah Istima'," *Al-Ittijah: Jurnal Keilmuan dan Kependidikan Bahasa Arab* 15, no. 2 (2023): 156-170.

¹⁵Rusandi and Muhammad Rusli, "Merancang Penelitian Kualitatif Dasar Atau Deskriptif dan Studi Kasus," *Al-Ubudiyah: Jurnal Pendidikan dan Studi Islam* 2, no. 1 (2021): 48-60, <https://doi.org/10.55623/au.v2i1.18>.

¹⁶Afifuddin and Beni Ahmad Saebani, *Metodologi Penelitian Kualitatif* (Bandung: Pustaka Setia, 2008). 145.

Results and Discussion

A. About Alef Education

1. Definition of Alef Education Media

Alef Education is a global educational technology company based in the capital of the United Arab Emirates, Abu Dhabi, one of the most innovative cities in the world. The idea of the Alef platform first came about in 2015 when it was conceptualized as a technology-based mode of education to meet the needs of the school system in the United Arab Emirates. From this concept, the company's vision then develops by including digital education transformation globally. Alef Education is a digital learning platform based on AI (Artificial Intelligence) or artificial intelligence that is only intended for students in madrasah schools learning Arabic. Alef Education can be used to make it easier for students to understand Arabic learning materials that contain learning materials, practice questions, and games so that during the activity students do not feel bored. How to access Alef Education is very easy, namely through the website and website link and the Alef Education account login code-shared by Arabic teachers.

Alef Education is one of the supporters of the success of Arabic language learning. The Alef Education platform provides a customized Arabic learning experience for all students, so they can experience fun learning anytime and anywhere. Arabic learning materials are presented through videos, games, and interactive questions that are fun and loved by students. The importance of Alef Education's learning media is due to its ease of use, so it can support face-to-face and remote teaching and learning activities (online), has interesting videos and audio that can create a fun learning atmosphere, has a real-time dashboard that helps monitor the progress of each student in the classroom, has more than 150 interesting, interactive, and arranged lessons by Indonesian curriculum standards. Providing questions along with ready-to-use answer keys to help teachers prepare for midterm exams, final exams, and quizzes, having an automatic assessment system to save teachers' time in evaluating, having additional activities and games to support teaching and learning activities so that they remain interesting for students, using the Alef Education platform makes the task as an educator easier and of course makes learning Arabic more fun, and there are various questions available (*kalam, kitabah,*

istima', and *qira'ah*) so that it can increase students' mastery in mastering Arabic language skills.

2. Weakness and Strengths of Alef Education Media

Alef Education is one of the supporters of the success of Arabic language learning. The Alef Education platform provides a customized Arabic learning experience for all students, so they can experience fun learning anytime and anywhere. Arabic learning materials are presented through videos, games, and interactive questions that are fun and loved by students. Every technology or learning media certainly contains its weaknesses and strengths. The shortcomings of Alef Education's learning media are;¹⁷ a) the Alef Education platform can only be used when the internet network is available, b) not all students have a cellphone or laptop that can be used to access the internet, c) lack of interaction between teachers or lecturers and students and students, d) ignoring academic and social aspects, e) the teaching and learning process tends towards training rather than education.¹⁸

Meanwhile, the advantages of Alef Education's learning media are as follows; a) easy to use, so that it can support face-to-face and remote teaching and learning activities (online), b) has interesting videos and audio that can create a fun learning atmosphere, c) there is a real-time dashboard that helps monitor the progress of each student in the classroom, d) has more than 150 interesting, interactive, and structured lessons in accordance with Indonesian curriculum standards, e) provide questions along with ready-to-use answer keys to assist teachers in preparing for midterm exams, final exams, and quizzes, f) having an automatic assessment system to save teachers time in evaluating, g) having additional activities and games to support teaching and learning activities so that they remain interesting for students, h) using the Alef Education platform makes the task as an educator easier and of course makes learning Arabic more fun, i) there are various questions available (*kalam*,

¹⁷Inayah Putri Damopolii, Anetha L.F. Tilaar, and Sylvia J.A. Sumarauw, "Analisis Penggunaan Aplikasi Alef Education Pada Pembelajaran Matematika Di Mts Al-Mujahidin Tomohon," *Dharmas Education Journal (DE_Journal)* 5, no. 1 (May 27, 2024): 211-218, <https://doi.org/10.56667/dejournal.v5i1.1234>.

¹⁸Andika Surya Listya Yudhana and Wahyu Andhyka Kusuma, "Kelebihan dan Kekurangan Pembelajaran Jarak Jauh Atau E-Learning dan Learning Management System (LMS) Menggunkan Pendekatan Literature Review, dan User Persona," *Jurnal Syntax Admiration* 2, no. 9 (2021): 1617-1628, <https://doi.org/10.46799/jsa.v2i9.303>.

kitabah, istima', and qira'ah), so that it can increase students' mastery in mastering Arabic language skills.¹⁹

3. Use of Alef Education Media in Indonesia

Alef Education signed a cooperation agreement with the Ministry of Religious Affairs of the Republic of Indonesia in November 2020, providing access to digital learning platforms to madrasas under the auspices of the Ministry of Religion of the Republic of Indonesia.²⁰ Since July 2021, Alef Education has granted access to up to 500.000 students in madrassas in Indonesia. Even now, Alef Education not only provides access to learning Arabic but also other learning materials, namely Mathematics and English. Alef Education is a global educational technology company based in the capital of the United Arab Emirates, Abu Dhabi, one of the most innovative and cosmopolitan cities in the world. The idea of the Alef Platform first emerged in 2015 when it was conceptualized as a technology-based mode of education to meet the needs of the local public school system in the United Arab Emirates.²¹ From this concept, the company's vision was then developed by incorporating digital education transformation for elementary school to high school education levels.

B. Steps to Implement Alef Education Learning Media

1. Steps to Implement Alef Education Learning Media for Teachers

The following are the steps to use Alef Education learning media for teachers:²²

- a. Make sure the user has an access code. You can ask for an access code at <https://alef.co.id/> or Alef Success Coach.

To make sure you have the necessary access codes, you can follow these steps. First, visit Alef's official website at <https://alef.co.id/>. On the main page,

¹⁹Nuroh Nuroh and Ubaidillah, "Pengaruh Penggunaan Media Pembelajaran Alef Education Terhadap Penguasaan Maharah Istima'," *Al-Ittijah: Jurnal Keilmuan dan Kependidikan Bahasa Arab* 15, no. 2 (2023): 156-170.

²⁰Maslaha, Irvan, and Marah Doly Nasution, "Penggunaan Platform Alef Education Dalam Sebagai Media Pembelajaran Untuk Meningkatkan," *JMES (Journal Mathematics Education Sigma)* 4, no. 2 (2023): 1-7.

²¹Nazera Emara, Nagla Ali, and Othman Abu Khurma, "Adaptive Learning Framework (Alef) in UAE Public Schools from the Parents' Perspective," *Social Sciences* 12, no. 5 (2023): 297, <https://doi.org/10.3390/socsci12050297>.

²²Herawati, "Penerapan Model Blended Learning Berbasis Platform Alef Education Pada Pembelajaran Matematika," *Jurnal Dimensi Matematika* Vol. 05 No (n.d.): 509-524, <https://ejournalunsam.id/index.php/JDM>.

look for a section or menu that provides information on how to get an access code. Instructions are directed to fill out the registration form or make direct contact with Alef's team. In addition, you can contact Alef Success Coach directly to request an access code. Alef Success Coach is a team of individuals responsible for assisting users in accessing Alef's services by providing the necessary guidance and information. Make sure you provide the necessary information and follow all the established procedures to obtain your access code.

- b. In addition to contacting Alef Success Coach, the list of access codes for the Banten region can also be accessed at the link <https://bit.ly/Kodak-Banten>, make sure the code matches the place of each school.

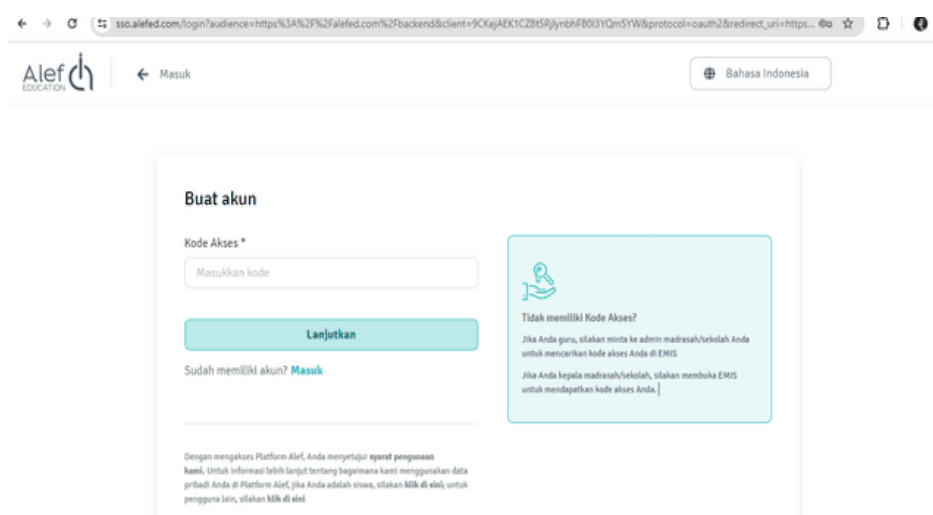
| 1 | NSM | Nama MTs | Negara | Provinsi | Kode Akses Kamad | Kode Akses Guru | Kabupaten/Kota |
|----|--------------|-----------------------------------|-----------|----------|------------------|-----------------|-----------------|
| 2 | 111136010001 | MIN 1 PANDEGLANG-111136010001 | INDONESIA | Banten | udvhdc | rnk33mn | Kab. Pandeglang |
| 3 | 111136010002 | MIN 2 PANDEGLANG-111136010002 | INDONESIA | Banten | kvhd7n | mmk453 | Kab. Pandeglang |
| 4 | 111136010003 | MIN 3 PANDEGLANG-111136010003 | INDONESIA | Banten | blygbx | rmufqx | Kab. Pandeglang |
| 5 | 111136020001 | MIN 1 LEBAK-111136020001 | INDONESIA | Banten | 96vf38 | exp396 | Kab. Lebak |
| 6 | 111136020002 | MIN 2 LEBAK-111136020002 | INDONESIA | Banten | 39ykte3 | xnn68p | Kab. Lebak |
| 7 | 111136030001 | MIN 2 TANGERANG-111136030001 | INDONESIA | Banten | y868kyf | mmbfu | Kab. Tangerang |
| 8 | 111136030002 | MIN 1 TANGERANG-111136030002 | INDONESIA | Banten | 3krm8c | rffpqn | Kab. Tangerang |
| 9 | 111136030003 | MIN 3 TANGERANG-111136030003 | INDONESIA | Banten | qcfegf | x8u8dg | Kab. Tangerang |
| 10 | 111136030004 | MIN 4 TANGERANG-111136030004 | INDONESIA | Banten | 6qyalgk | kcygmv | Kab. Tangerang |
| 11 | 111136030005 | MIN 5 TANGERANG-111136030005 | INDONESIA | Banten | b7xnqnd | jcd9gr | Kab. Tangerang |
| 12 | 111136030006 | MIN 6 TANGERANG-111136030006 | INDONESIA | Banten | v8tcaax | gvabxu | Kab. Tangerang |
| 13 | 111136030007 | MIN 7 TANGERANG-111136030007 | INDONESIA | Banten | bv8tqwt | 33jvph | Kab. Tangerang |
| 14 | 111136040001 | MIN 1 SERANG-111136040001 | INDONESIA | Banten | px9mwdt | nmt86u | Kab. Serang |
| 15 | 111136040002 | MIN 2 SERANG-111136040002 | INDONESIA | Banten | aecn838 | 7yuu4kc | Kab. Serang |
| 16 | 111136040003 | MIN 3 SERANG-111136040003 | INDONESIA | Banten | rfggj | dwvrv9 | Kab. Serang |
| 17 | 111136040004 | MIN 4 SERANG-111136040004 | INDONESIA | Banten | amvbx3d | 3beuf9f | Kab. Serang |
| 18 | 111136710001 | MIN 1 KOTA TANGERANG-111136710001 | INDONESIA | Banten | 9dhuq83 | n4pktx | Kota Tangerang |

Picture 1. List of Banten Regional Access Codes

- c. Once you get the access code, go to idn.alefed.com and select "Create New Account".

After successfully obtaining the access code, the next step is to open the Alef Indonesia website at <http://idn.alefed.com>. On the main page of the site, find and click on the "Create a New Account" option. You will be redirected to the registration page where you will be asked to fill in the personal information required to create a new account. Start by entering the access code that has been obtained or from the list of access codes in the Banten area according to the school agency. Then, continue by filling in personal data such as full name, email address, phone number, and password that you want to use for Alef's account, make sure the password is recorded so that you don't forget it. Double-check that all the information you

entered is correct and matches your identity. After completing all the required fields, review the data you have entered to make sure there are no errors.



Picture 2. Alef Education New Account Creation Menu

d. Once all the information is complete, click "Create account".

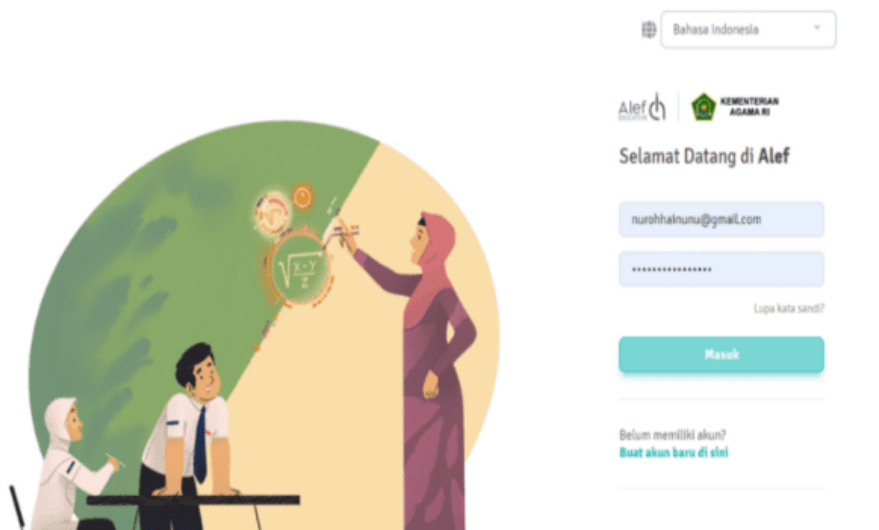
If everything is correct, click on the "Sign Up" or "Create Account" button to complete the registration process. You will receive a confirmation email to activate your account. Open the email and follow the instructions provided to activate a new account on Alef. Once your account is active, you can start accessing the various services and features offered by Alef to support learning success.

e. Finally, information will appear that you have registered and can log in to the Ale Platform.

The last step is to look at the registration confirmation information. On the screen, a message will appear stating that you have been successfully registered and can now log in to the Alef Platform. This message usually contains congratulations and a brief hint of the next step. You may see a button or link that directs you directly to the login page. Click on the link, or go back to the main page and select the "Login" option.

Now, you have successfully logged into the Alef Platform and can start using the various features and services available to support learning and development.

Explore the platform to find a variety of tools, educational materials, and learning resources.



Picture 3. Login Platform Alef Education

2. Steps to Implement Alef Education Learning Media for Students

The following are the steps to use Alef Education's learning media for students:

- a. Click on the link or access code shared by the teacher.

To get started, click on the Alef Education link that your teacher has shared. This step is important to access Alef's education platform.

When you click on the idn.alefed.com link, you will be redirected to the login or registration page on the Alef Education website. Here, you may be asked to enter the access code provided by your teacher. This access code is in the form of a code registered to use the Alef platform or can be seen on the list of access codes for the Banten region.

- b. After getting the link, please open the link on your laptop or mobile browser and you will see the account creation page.

If this is your first time accessing Alef, you will need to create a new account. Follow the on-screen instructions to enter your personal information, such as your full name, email address, and password. Make sure all the data you enter is accurate and matches your identity. Fill in the required information,

namely first name, last name, and email address. Then you also create an account password and don't forget to write down the password so you don't forget it. Once all the information is filled in, click on "Create Account".

Picture 4. Creating an Alef Education account for students

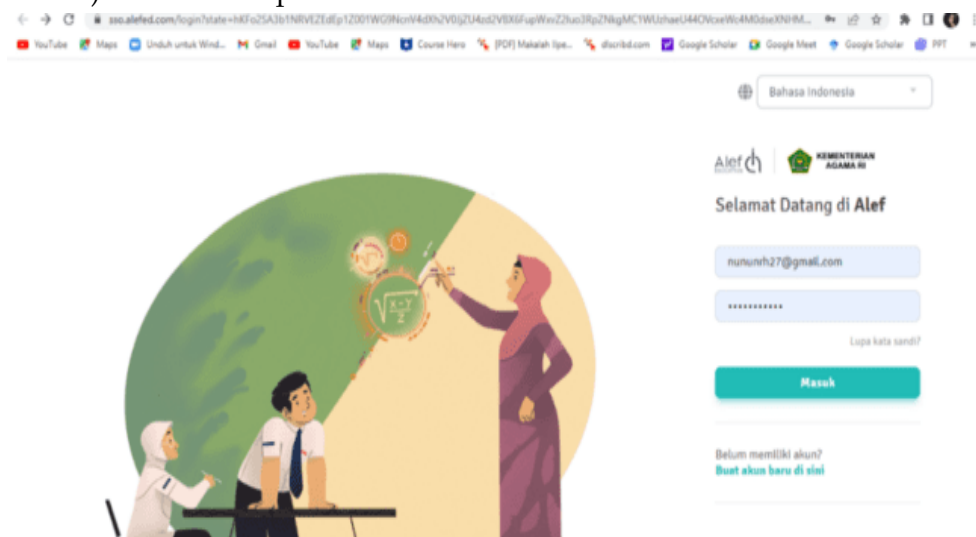
- c. Check in advance the information displayed, whether the Madrasah or School, Role, State, and Province are correct.

Before proceeding with the process of joining or accessing classes, it is very important to first check the information displayed on your account or profile. Make sure that the information about the Madrasah or School is correct, including the name of the educational institution where you are registered. Also verify your role in the platform, whether as a student, teacher, or other role, as mistakes in the role can affect the access and privileges you have in the system. Next, check the information about the Country and Province registered on your account. This geographic information is important to ensure that you are connected to the curriculum and content relevant to your location. Errors in country or provincial information can lead to errors in subject matter adjustments, academic calendars, and other arrangements of a regional nature.

By making sure that all of this information is correct, you can avoid any administrative and technical issues that may arise later on. It also helps ensure that the communication and information received from the school or madrasah will be tailored to your needs.

- d. Finally, information will appear that you have registered and can log in on the Alef Platform.

After successfully creating an account, you will get a confirmation that your account has been created and you can now log in. If you already have an account, you can simply enter your existing login information (email and password) to access the platform.

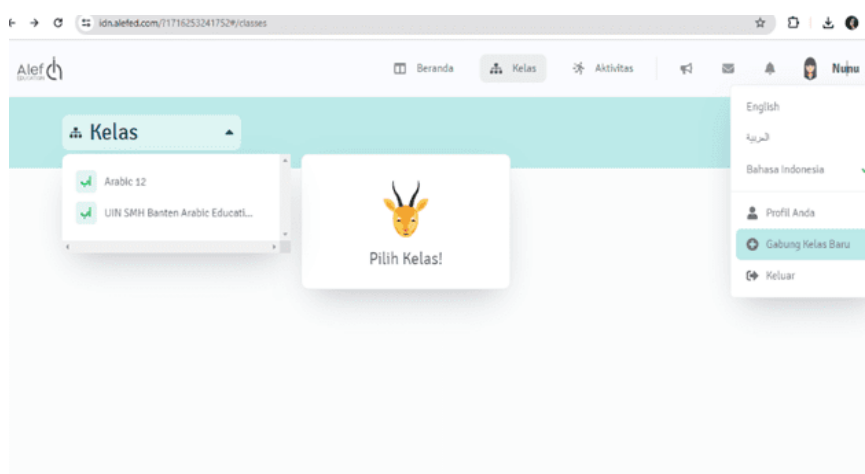


Picture 5. Alef Education Platform Login for Students

3. Steps to Join Alef Education Platform Classes for Students and Do Science and Technology Material Assignments

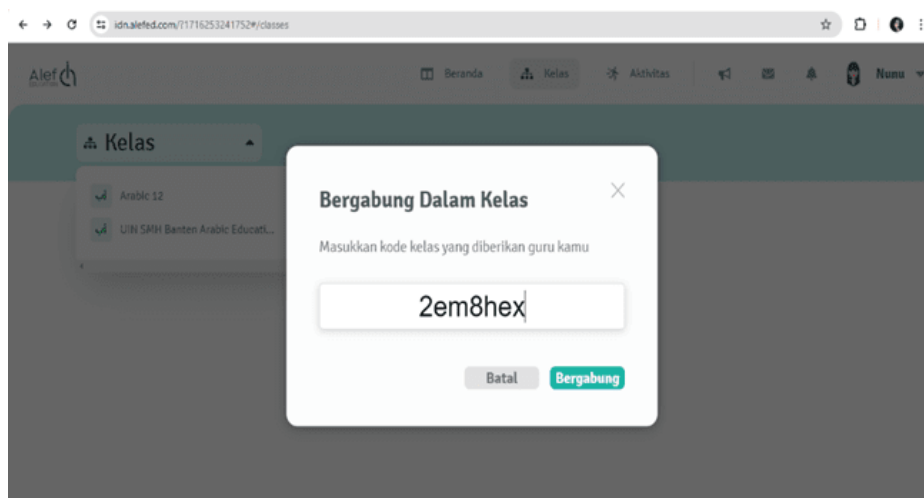
The following are the steps to join the class and do the Arabic science and technology material assignments:

- a. Ask for the class access code shared by the teacher. If you don't have a class yet, select "Join New Class."



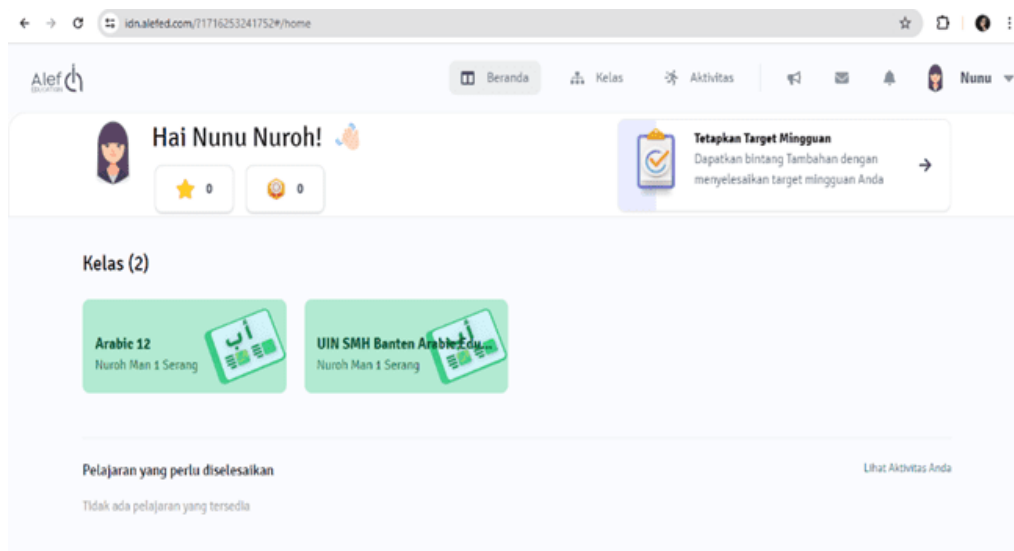
Picture 6. Alef Education Class Join Menu

b. Enter the class code that has been shared by the teacher, then click "Join".



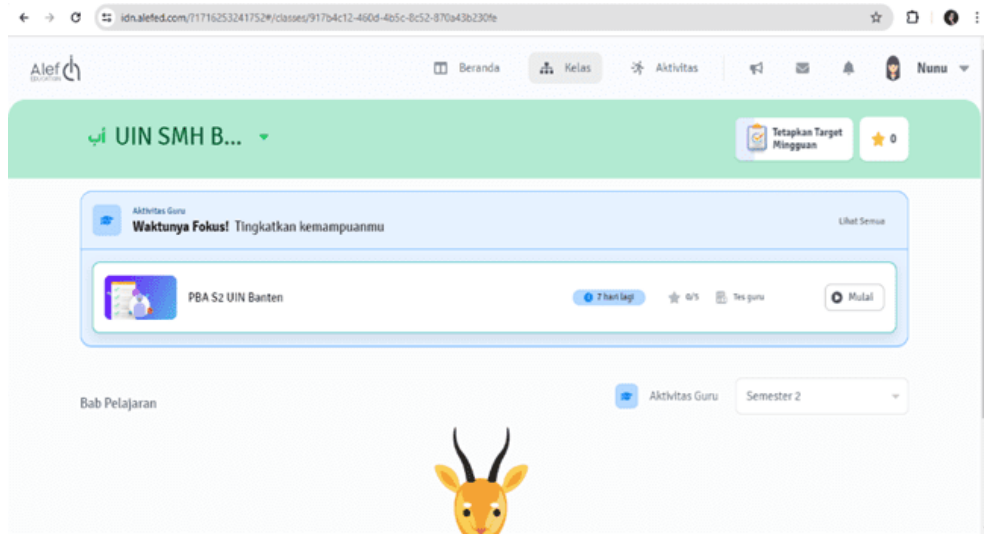
Picture 7. Alef Education Class Join Menu

c. However, if you already have a class, just select the class that is already available from the list of classes in your account.

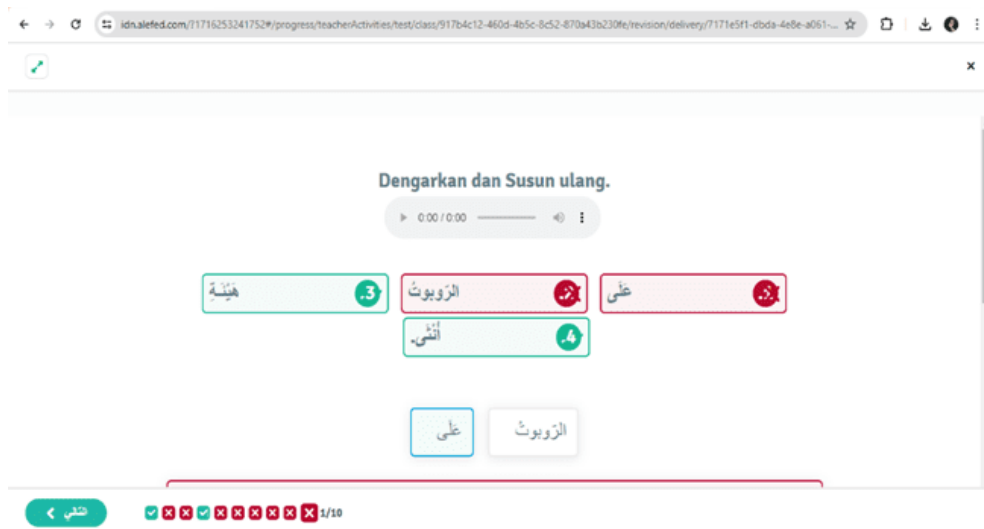


Picture 8. Class Selection

- d. If the class has been selected, you can directly work on the teacher's assignment and enjoy the features provided on the Alef Education platform.

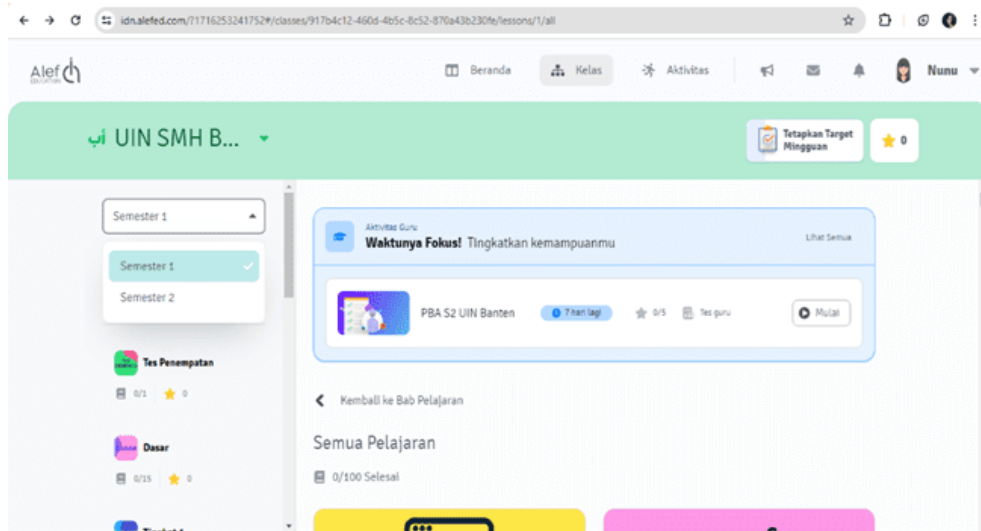


Picture 9. Assignment View from Teachers



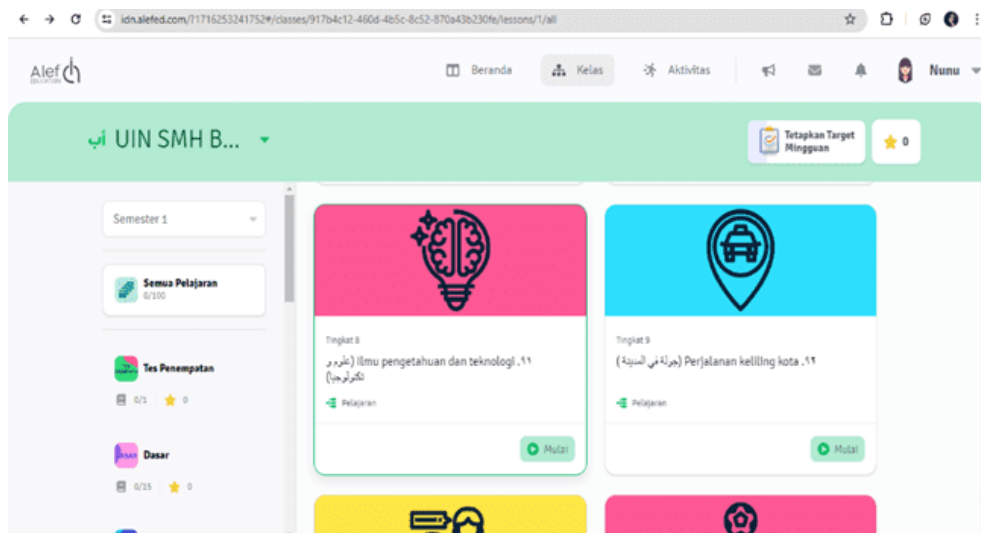
Picture 10. Assignment View from Teachers

- e. You can choose a semester, there are two semester options, namely semester 1 (one) and semester 2 (two). You are free to choose all the learning materials available from placement tests, basic, level 1 to level 9.



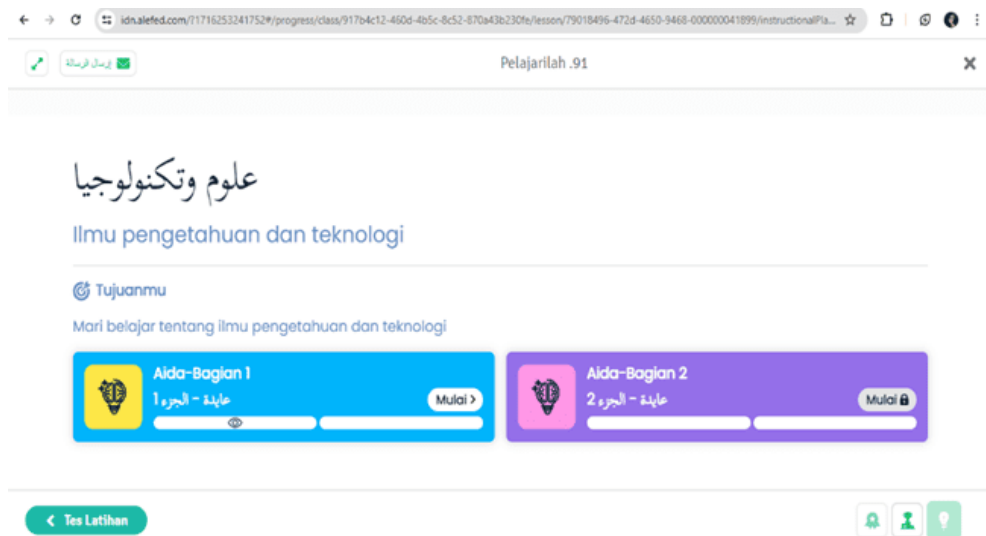
Picture 11. Semester Selection Display

- f. Regarding the "Science and Technology" material, you click on meter 1 (one) then select level 8.



Picture 12. Level 8 "Science and Technology" Material

- g. The material "Science and Technology" consists of 2 parts, namely part 1 (one) and part 2 (two).



Picture 13. Material Section "Science and Technology"



Picture 14. Examples of Conversation Materials "Science and Technology"

To improve the quality of integrated Arabic language learning through science and technology materials, researchers strongly recommend the use of the Alef Education platform. The platform offers an interactive approach that integrates content and artificial intelligence technology to create an immersive and engaging learning atmosphere. The use of Alef Education is supported by ready-made lessons, games, and assessments that can be used in schools or madrasas, outside of schools or madrasas, or from home.

Alef Education not only supports its students to learn Arabic effectively but prepares them to face the challenges of the future in an increasingly rapid world. With the use of the platform as an interactive medium for Arabic, the use of Alef Education Arabic language learning media can affect the mastery of the four *maharah* of Arabic and effectively support any learning situation (online, face-to-face, and blended learning).

Conclusion

Alef Education is one of the supporters of the success of Arabic language learning which provides various questions such as *kalam*, *kitabah*, *istima'*, and *qira'ah*, especially in the material "Science and Technology", so that it can increase students' mastery of Arabic language skills. The Alef Education platform provides a customized Arabic learning experience for all students so that they can experience fun learning anytime and anywhere. The Alef Education platform can only be used when the internet network is available. There are various advantages that Alef Education media has, such as being easy to use, having interesting videos and audio that can create a fun learning atmosphere, a real-time dashboard that helps monitor the progress of each student in the classroom, having more than 150 interesting, interactive, and structured lessons by Indonesian curriculum standards, providing questions and answer keys, having an assessment system, has additional activities and games, makes it easier to make assignments and of course makes learning Arabic more fun, and there are a variety of questions available. The steps to implement Alef Education learning media for teachers and students are explained systematically by the researcher so that the use of the Alef Education platform as an Arabic interactive media for science and technology materials can be understood as a whole. Further research is suggested to develop Alef Education learning media with various Arabic language skills associated with new findings in the masses in the future.

References

- Afifuddin, and Beni Ahmad Saebani. *Metodologi Penelitian Kualitatif*. Bandung: Pustaka Setia, 2008.
- Alyammahi, Aisha Hassan. "The Impact of Alef Platform on Students' Performance at Al Asayel School in Abu Dhabi, UAE." *Journal for Researching Education Practice and Theory (JREPT)* 2, no. 1: 80-108 (2019): 82.

- Damopolii, Inayah Putri, Anetha L.F. Tilaar, and Sylvia J.A. Sumarauw. "Analisis Penggunaan Aplikasi Alef Education Pada Pembelajaran Matematika di Mts Al-Mujahidin Tomohon." *Dharmas Education Journal (DE_Journal)* 5, no. 1 (2024): 211-218. <https://doi.org/10.56667/dejournal.v5i1.1234>.
- Diniati, Rini. "Pemanfaatan Platform Alef Dalam Pembelajaran Matematika Kelas VII." *ACTION: Jurnal Inovasi Penelitian Tindakan Kelas dan Sekolah* 3, no. 4 (2023): 266-273. <https://doi.org/10.51878/action.v3i4.2562>.
- Education, Alef. "Alef Education." Alef Education Indonesia, 2021. <https://alef.co.id/alef-educationindonesia/>.
- Emara, Nazera, Nagla Ali, and Othman Abu Khurma. "Adaptive Learning Framework (Alef) in UAE Public Schools from the Parents' Perspective." *Social Sciences* 12, no. 5 (2023): 297. <https://doi.org/10.3390/socsci12050297>.
- Fahril, Nurbiah, and Ahmad Syafi'i Syafi'i. "Implementation of the Problem-Based Learning Model Help Alef Education in Mts As'adiyah Uloe." *An-Nahdlah: Journal of Islamic Studies* 1, no. 1 (2024): 54-70. <https://doi.org/10.62261/annahdlah.v1i1.4>.
- Harsiwi, Udi Budi, and Liss Dyah Dewi Arini. "Pengaruh Pembelajaran Menggunakan Media Pembelajaran Interaktif Terhadap Hasil Belajar Siswa di Sekolah Dasar." *Jurnal Basicedu* 4, no. 4 (2020): 1104-1113. <https://doi.org/10.31004/basicedu.v4i4.505>.
- Herawati. "Penerapan Model Blended Learning Berbasis Platform Alef Education Pada Pembelajaran Matematika." *Jurnal Dimensi Matematika* 5, no. 2 (2022): 509-524. <https://ejournalunsam.id/index.php/JDM>.
- Manoppo, Ningsih, Siti Aliyya Laubaha, and Nurhanifa Basarata. "Ragam Aplikasi Dalam Pembelajaran Bahasa Arab." *Assuthur: Jurnal Pendidikan Bahasa Arab* 1, no. 2 (2023): 80-97. <https://doi.org/10.58194/as.v1i2.473>.
- Maslaha, Irvan, and Marah Doly Nasution. "Penggunaan Platform Alef Education Dalam Sebagai Media Pembelajaran Untuk Meningkatkan." *JMES (Journal Mathematics Education Sigma)* 4, no. 2 (2023): 1-7.
- Muhamad, Sahrul, Abdul Muntaqim Al Anshory, R. Taufiqurrochman, and Alfarizi Farhan Mokoagow. "Pembelajaran Maharatul Kalam Berbasis Media Alef di Madrasah Tsanawiyah." *Nady Al-Adab: Jurnal Bahasa Arab* 21, no. 1 (2024): 1-15. <https://doi.org/https://doi.org/10.20956/jna.v21i1.32375>.
- Nuroh, Nuroh, and Ubaidillah. "Pengaruh Penggunaan Media Pembelajaran Alef Education Terhadap Penguasaan Maharah Istima'." *Al-Ittijah: Jurnal Keilmuan Dan Kependidikan Bahasa Arab* 15, no. 2 (2023): 156-170.
- Rahma M. Naser. "Meningkatkan Pembelajaran Bahasa Arab Siswa Melalui Media Audio Visual Dalam Manajemen Pendidikan Islam Tinjauan (Studi di Madrasah Aliyah Negeri 2 Kota Palu)." *Jurnal Kolaboratif Sains* 5, no. 8 (2022): 466-480. <https://doi.org/10.56338/jks.v5i8.2695>.

- Rakhlin, Natalia V., Abdullah Aljughaiman, and Elena L. Grigorenko. "Assessing Language Development in Arabic: The Arabic Language: Evaluation of Function (ALEF)." *Applied Neuropsychology: Child* 10, no. 1 (2021): 37-52. <https://doi.org/10.1080/21622965.2019.1596113>.
- Rusandi, and Muhammad Rusli. "Merancang Penelitian Kualitatif Dasar Atau Deskriptif dan Studi Kasus." *Al-Ubudiyah: Jurnal Pendidikan dan Studi Islam* 2, no. 1 (2021): 48-60. <https://doi.org/10.55623/au.v2i1.18>.
- Shabur, Aunur, Maajid Amadi, and Dina Wilda Sholikha. "Perkembangan Pendidikan Bahasa Arab di Era Digital: Systematic Literature Review." *Jurnal Motivasi Pendidikan Dan Bahasa* 1, no. 3 (2023): 301-309. <https://journal.widyakarya.ac.id/index.php/jmpb-widyakarya/article/view/1112>.
- Surayanah, Yuniawatika, M. Anas Thohir, Sabina Ndiung, and Siti Mas'Ula. "The Effect of The Self-Regulated Learning with The Alef Education Platform to Improve the High-Order Thinking Skills in Elementary School." In *International Conference on Education and Technology (ICET)*, 95-98. Malang, 2022. doi: 10.1109/ICET56879.2022.9990733.
- Surya Listya Yudhana, Andika, and Wahyu Andhyka Kusuma. "Kelebihan dan Kekurangan Pembelajaran Jarak Jauh Atau E-Learning dan Learning Management System (LMS) Menggunakan Pendekatan Literature Review, dan User Persona." *Jurnal Syntax Admiration* 2, no. 9 (2021): 1617-1628. <https://doi.org/10.46799/jsa.v2i9.303>.
- Tolinggi, Syindi Oktaviani R. "Pembelajaran Bahasa Arab di Indonesia Pada Era Revolusi Teknologi Tak Terbatas (Strengths, Weaknesses, Opportunities, and Threats)." *An Nabighoh: Jurnal Pendidikan dan Pembelajaran Bahasa Arab* 23, no. 1 (2021): 33-49. <https://doi.org/10.32332/an-nabighoh.v23i1.2231>.
- Wahdah, Yuniarti Amalia, Muhajir Muhajir, and Abdurrahman Wahid Abdullah. "Kamus Online Sebagai Media Penerjemahan Teks Bagi Calon Guru Bahasa Arab." *Edukasiana: Jurnal Inovasi Pendidikan* 2, no. 3 (2023): 138-150. <https://doi.org/10.56916/ejip.v2i3.368>.